

23rd April 2025

Title: Ceiling Site Investigations_File Note Summary

The purpose of this file note is to summarise the ceiling investigations for The Reveller as discussed on site between the following:

Historic Royal Palaces (HRP)

Sara Nabulsi (SN)

Jamie Fobert Architects (JFA)

Morgan Williams Parnell (MWP)

Olivia Holt (OH)

Sykes

Nick McLaughlin (NM)

Paul Dowding (PD)

Hockley & Dawson (HD)

Kate Buxton (KB)

1.0 Description of Visit

1.1 Visit

- All above consultants met on site to discuss the removal of ceiling tiles to inspect the existing soffit in The Revellers, Wharf level.
- Ceiling tiles removed in the 2nd, 3rd and 4th wharf level arches
-

1.2 Key comments

- PD noted mice droppings upon tile removal
- MWP queried waterproofing installation and warranty on 2nd arch rear room (East) – see image below. HRP likely do not have this information, but latest installation would have been 2012.



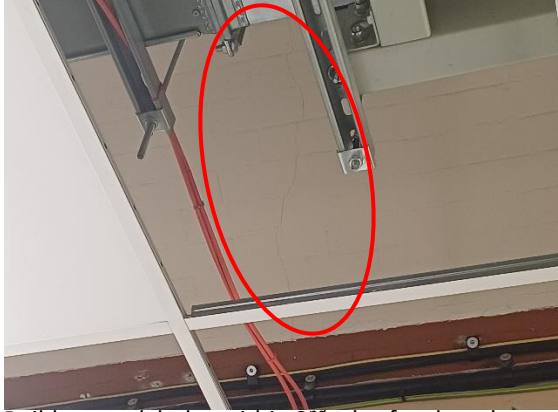
- Red pipework disappearing through soffit of 2nd wharf arch, investigations required as to what this pipework is and where it is going – see image below.





HISTORIC ROYAL PALACES

- Requirements for proposed access hatches and coordination with Purcell's access hatches for monitoring purposes. Opportunity to have these coordinated to reduce the amount of hatches in the ceiling. If MEP kit is in the way then soffit visibility likely won't be possible.
- Visible crack across the soffit of all 4 wharf arches. KB noted possibly linked as they appear to be along the same linear path – see image below.



- Builders work holes within 2nd wharf arch and noted dimensions on wall – see image below.



- Door reveal on Tower Bridge wall within Revellers entrance space. Discussion as to whether the steel(?) wall lining can be removed for JFA investigations – on the right side only. Left side lining has become engaged so seemingly harder to remove – see image below.



2.0 Next Steps

- HRP to arrange deep clean of the Revellers at wharf level, before 1st May
- Purcell to confirm position on replacement of waterproofing in 2nd wharf arch, rear commercial kitchen room and impact on JFA specification of acoustic plaster.
- Purcell to confirm method for monitoring the soffit and coordinate with HH
- KB further discussion and any concern regarding soffit cracks

**TOWER OF LONDON • HAMPTON COURT PALACE • BANQUETING HOUSE
KENSINGTON PALACE • KEW PALACE • HILLSBOROUGH CASTLE AND GARDENS**



HISTORIC ROYAL PALACES

- Builders work holes position tbc and impact on design, KB, HRP, JFA
- KB to write summary from a structural perspective with methodology – The moment we feel any resistance / affecting the wall we must stop. HRP confirms the wall belongs to TB but finish is ours, so likely can be removed, subject to KB summary.

Author:

Sara Nabulsi March; DipArch

Project Manager

sara.nabulsi@hrp.org.uk